

Instructions for Use

Cord Stick® Multiple Draw System

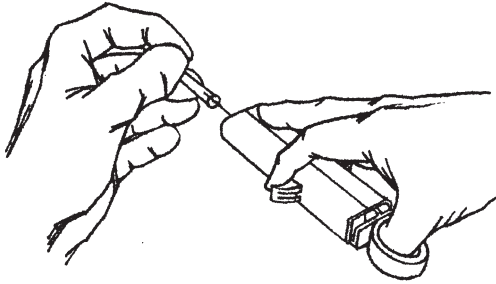
For Umbilical Cord Blood Sampling

Patent No. 5,569,210

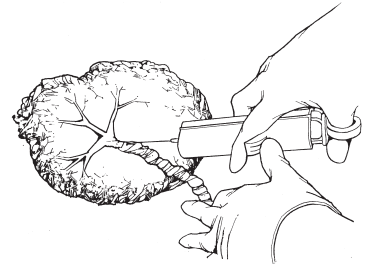
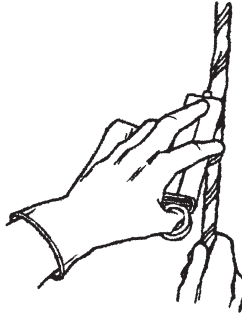
Cord Stick® Multiple Draw System is intended for obtaining two samples of venous umbilical cord blood after delivery of a newborn infant and aids in the prevention of needle stick injury.

1. Remove device from package by first peeling off paper lid. Device may be lifted out of package blister or simply tipped out of tray onto the instrument table in the operating or delivery room.

2. Place thumb in plunger ring and fingers on finger wings located on barrel sides. With other hand, pull off needlecap.

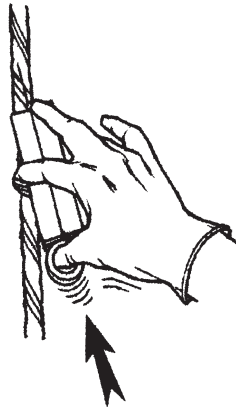


3. If possible, carefully thread needle through Whartons Jelly for a distance before entering the vein. This technique reduces post sampling spray. If there is a scant Wharton's Jelly, a clamp placed 10 inches above the bottom clamp will also reduce spray.

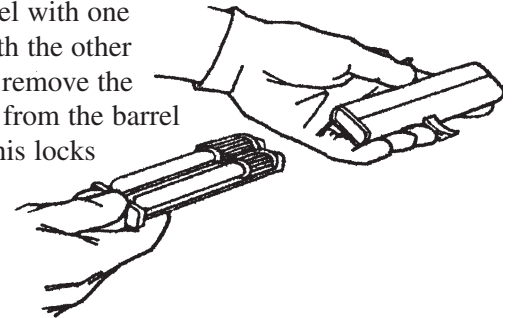


Blood may be obtained from placental surface veins after its delivery or from an isolated segment of umbilical cord.

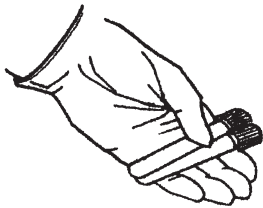
4. Insert needle into umbilical vein. Flashback will be observed in the needle manifold. **IMMEDIATELY** press the plunger tray forward with thumb until it stops. (Any delay allows blood to drip from the internal needles increasing splash contamination of the tubes.) When the tubes are about half full (6 seconds) an adequate specimen is obtained. Remove needle from vein prior to complete filling, allowing vacuum to empty manifold, further reducing contamination.



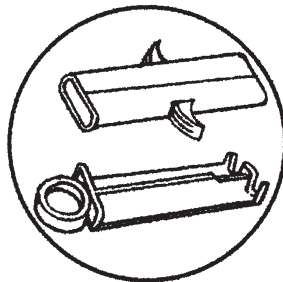
5. Place device in opposite hand as shown, and being careful to keep both hands behind finger wings, hold sides of barrel with one hand and with the other hand slowly remove the plunger tray from the barrel assembly. This locks the needles inside the barrel housing.



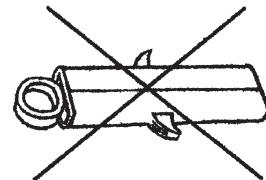
6. Inspect the top of the tubes to assure a needle has not detached from manifold. Remove the sample tubes from the tray, label with patient information, and arrange for delivery of samples to the lab.



7. The **Cordstick®** Multiple Draw System parts should be disposed of disassembled in a sharps container.



Do not attempt to reassemble device for more compact disposal.



Caution:
Federal law restricts this device to sale by or on the order of a physician.

Revision B

Manufactured for:
Cord Stick Corporation
1400 Florida Avenue, Suite 205 • Modesto, CA 95350
(209) 524-4821 • Fax (209) 524-1854
www.cordstick.com

Sterile in unopened, undamaged package
FDA registered.



For Single use only.
Do not reuse.